

# 卫生视镜

Sanitary Sight Glass

YODSN 永德信®



# 卫生视镜

## Sanitary Sight Glass

### 应用 / Applications

- 卫生视镜由不锈钢结构和玻璃组成。在食品加工，化妆品，制药和精细化工工业中，可以通过它清晰并且精确的观察到物料流动。
- Sanitary sight glass is comprised of stainless steel frame and glass. Through it, operator can observe the flowing of the liquid substance clearly and precisely in the fields of food, cosmetics, pharmaceutical and fine chemicals industries.

### 材料 / Materials

- 产品过流钢制部件:304/316L
- 其他钢制部件 :304
- 视镜材质: 钢化硼硅玻璃、钢化玻璃
- 密封件: EPDM (标配) NBR、PTFE (选配)
- Product wetted steel parts: 304 / 316L
- Other steel parts: 304
- The material of glass: silicon boride glass or, tempered glass
- Sealing silicon boride glass or, tempered glass
- Sealing elements:EPDM(standard) NBR,PTFE(optional)

### 技术参数 / Technical Data

工作温度: -20 ~ 135℃ (密封件为 EPDM 时)  
Working temperature: -20 ~ 135℃ (when the sealing is EPDM.)

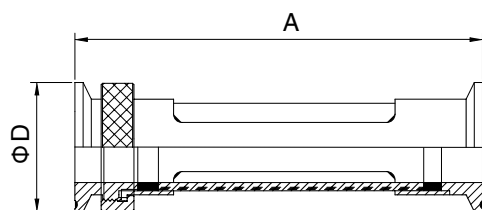


### 最大操作压力(bar)

#### Max.Operating Pressure (bar)

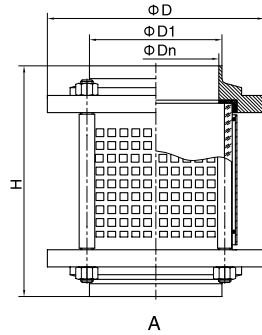
DIN	25	32	40	50	65	80	100
PYREX玻璃glass	10	10	10	8	7	6	5

### 锁紧式直通视镜 Locking type Straight Endoscopic

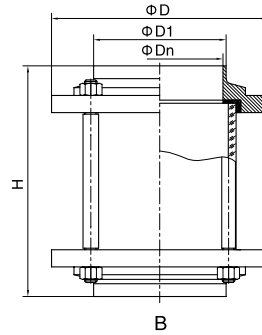


NO.1115001

SIZE	A	D
1"	155	50.5
1 1/4"	155	50.5
1 1/2"	155	50.5
2"	155	64



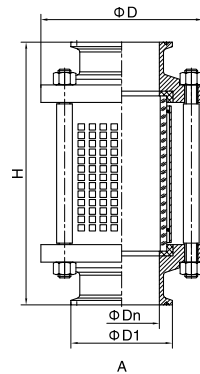
NO.1115002



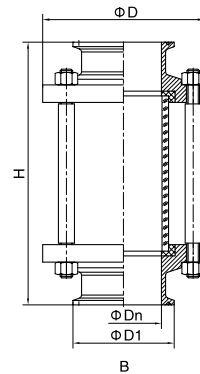
NO.1115003

焊接直通视镜 Welded Straight Sight Glass					DIN
SIZE	H	D	D1	Dn	
DN20	140.5	78	22	19	
DN25	140.5	78	28	25	
DN32	140.5	82	34	31	
DN40	140.5	88	40	37	
DN50	140.5	102	52	49	
DN65	149	124	70	66	
DN80	151	139	85	81	
DN100	155	154	104	100	
DN125	158	185	129	125	

INCH				
SIZE	H	D	D1	Dn
1"	144	78	25.4	22.4
1 <sup>1</sup> / <sub>4</sub> "	144	80	31.8	38.8
1 <sup>1</sup> / <sub>2</sub> "	144	80	38.1	35.1
2"	144	100	50.8	48.8
2 <sup>1</sup> / <sub>2</sub> "	144	117	63.5	59.5
3"	150	129	76.2	72.2
3 <sup>1</sup> / <sub>2</sub> "	150	140	89	85
4"	156	160	101.6	97.6



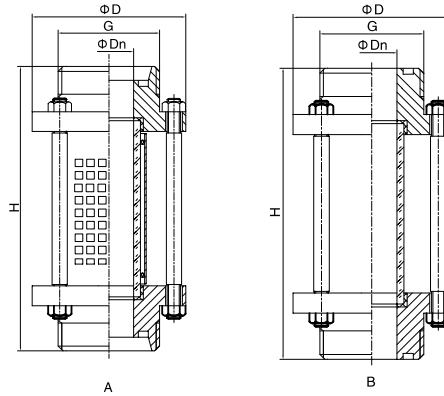
NO.1115004



NO.1115005

快装直通视镜 Clamped Straight Sight Glass					DIN
SIZE	H	D	D1	Dn	
DN20	159	78	34	19	
DN25	159	78	50.5	25	
DN32	163	82	50.5	31	
DN40	163	88	50.5	37	
DN50	165	100	64	49	
DN65	169	127	91	66	
DN80	175	140	106	81	
DN100	179	160	119	100	

INCH				
SIZE	H	D	D1	Dn
1"	159	78	50.5	22.4
1 <sup>1</sup> / <sub>4</sub> "	163	80	50.5	28.8
1 <sup>1</sup> / <sub>2</sub> "	163	88	50.5	35.1
2"	165	100	64	47.8
2 <sup>1</sup> / <sub>2</sub> "	169	117	77.5	59.5
3"	169	129	91	72.2
3 <sup>1</sup> / <sub>2</sub> "	175	140	106	84.9
4"	179	160	119	97.6

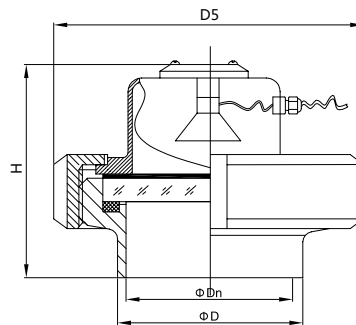


NO.1115006

NO.1115007

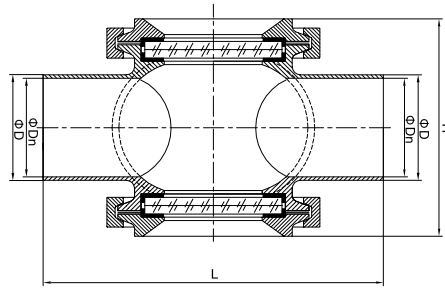
螺纹直通视镜 Threaded Straight Sight Glass					DIN
SIZE	H	G	D	Dn	
DN20	159	RD43.5 × 1/6	78	19	
DN25	159	RD51.5 × 1/6	78	25	
DN32	159	RD57.5 × 1/6	86	31	
DN40	161	RD64.5 × 1/6	90	37	
DN50	171	RD77.5 × 1/6	106	49	
DN65	169	RD94.5 × 1/6	124	66	
DN80	175	RD109.2 × 1/4	139	81	
DN100	177	RD129.2 × 1/4	159	100	
DN125	179	RD159.2 × 1/4	185	125	

					SMS
SIZE	H	G	D	Dn	
1"	159	RD39.5 × 1/6	78	22.4	
1 1/4"	159	RD47.5 × 1/6	78	28.8	
1 1/2"	159	RD59.5 × 1/6	86	35.1	
2"	159	RD69.5 × 1/6	102	47.8	
2 1/2"	167	RD84.5 × 1/6	115	59.5	
3"	169	RD97.2 × 1/6	128	72.2	
3 1/2"	169	RD104.2 × 1/6	139	84.9	
4"(小)	173	RD124.2 × 1/4	154	97.6	
4"(大)	179	RD131.2 × 1/6	159	97.6	



NO.1115008

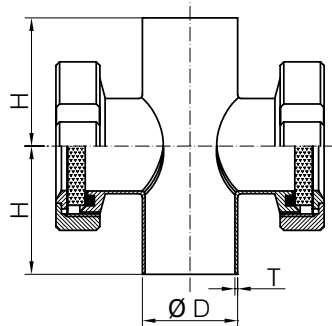
不锈钢泛光灯视镜 SS Luminaire Sight Glass				
SIZE	Dn	D	H	D5
DN80	81	87	90	125
DN100	100	106	100	146
DN125	125	132	90	178
DN150	150	157	96	210



NO.1115009

球形四通视镜 Four-Way Ball Type Sight Glass					DIN
SIZE	D	Dn	H	L	
DN25	28	25	64	100	
DN32	34	31	78	100	
DN40	40	37	83	130	
DN50	52	49	99	164	
DN65	70	66	125	190	
DN80	85	81	138	210	
DN100	104	100	140	230	

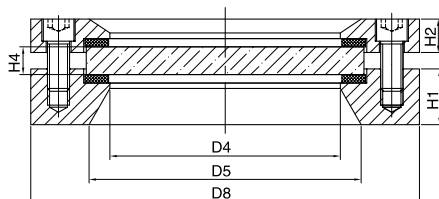
INCH				
SIZE	D	Dn	H	L
1"	25.4	22.4	64	100
1 <sup>1</sup> / <sub>4</sub> "	31.8	28.8	78	100
1 <sup>1</sup> / <sub>2</sub> "	38.1	35.1	83	130
2"	50.8	47.8	99	164
2 <sup>1</sup> / <sub>2</sub> "	63.5	59.5	125	190
3"	76.2	72.2	138	210
4"	101.6	97.6	140	230



NO.1115010

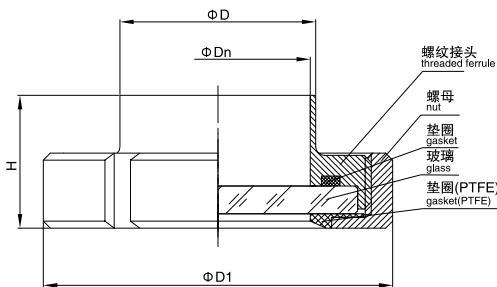
四通视镜 Cross Sight Glass				DIN
SIZE	H	D	T	
DN25	50.0	28.0	1.5	
DN32	55.0	34.0	1.5	
DN40	60.0	40.0	1.5	
DN50	70.0	52.0	1.5	
DN65	80.0	70.0	2.0	
DN80	90.0	85.0	2.0	
DN100	100.0	104.0	2.0	

INCH			
SIZE	H	D	T
1"	33.5	25.4	1.65
1 <sup>1</sup> / <sub>4</sub> "	38.0	31.8	1.65
1 <sup>1</sup> / <sub>2</sub> "	48.5	38.1	1.65
2"	60.5	50.8	1.65
2 <sup>1</sup> / <sub>2</sub> "	83.5	63.5	1.65
3"	88.5	76.2	1.65
4"	127.0	101.6	2.10



NO.1115011

法兰视镜 Flanged Sight Glass							
SIZE	H4	D4	D5	D8	H1	H2	
DN25	10	48	63	100	20	12	
DN32	10	63	78	115	20	12	
DN40	10	63	78	115	20	12	
DN50	10	83	98	140	20	12	
DN65	15	108	123	165	25	15	
DN80	15	108	123	165	25	15	
DN100	20	133	148	190	25	20	
DN125	20	158	173	224	25	20	
DN150	25	183	198	250	30	25	
DN200	30	233	248	310	30	30	



NO.1115012

由任视镜 Union Type Sight Glass		DIN		
SIZE	H	D1	D	Dn
DN25	28	63	28	25
DN32	28	70	34	31
DN40	28	78	40	37
DN50	28	92	52	49
DN65	30	112	70	66
DN80	33	127	85	81
DN100	37	148	104	100
DN125	40	178	129	125
DN150	42	210	154	150

INCH				
SIZE	H	D1	D	Dn
1"	25	54	25.4	22.4
1 <sup>1</sup> / <sub>4</sub> "	25	70	31.8	28.8
1 <sup>1</sup> / <sub>2</sub> "	28	72	38.1	35.1
2"	28	92	50.8	47.8
2 <sup>1</sup> / <sub>2</sub> "	32	97	63.5	59.5
3"	33	112	76.2	72.2
3 <sup>1</sup> / <sub>2</sub> "	34	125	89.0	85.0
4"	36	148	101.6	97.6

# 工业阀门

Industrial Valve

YODSN 永德信®

